

## Instruction Manual for "NEW TAPEMATIC MINI"

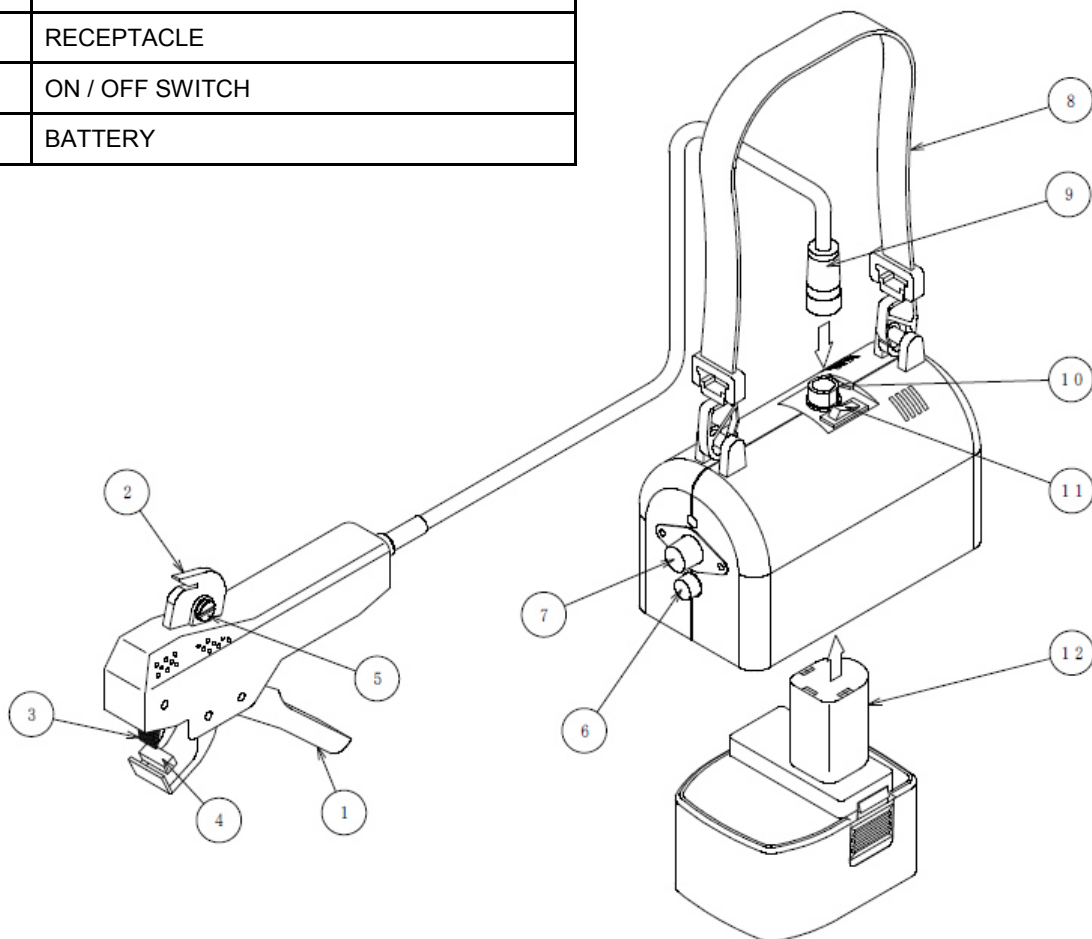
Please read this instruction manual carefully before operations.

Be sure to read the "SAFETY RULES" section before using this device.

After you finish reading, keep this document handy in a safe place in case you need it in the future

### PARTS

①	SWITCH TRIGGER
②	SAFETY CUTTER
③	HORN
④	ANVIL
⑤	SCREW TO FIX THE ROUND CUTTER BLADE
⑥	FUSE
⑦	TIMER KNOB
⑧	SHOULDER BELT B
⑨	PLUG
⑩	RECEPTACLE
⑪	ON / OFF SWITCH
⑫	BATTERY



## SAFETY RULES

1. Please do not disassemble the device.
2. As this device is a precision instrument, please do not drop it.  
The heavy impact of dropping may cause malfunction.
3. Although the device has a doubly insulated structure, please do not touch the device with wet hands to avoid any troubles.
4. To make the device light and easy to use, the body (outer-case) is made of plastic material.  
If it is dropped or left on a high temperature surface, it may cause a deformation that might cause malfunction as well.  
Please keep the device away from such circumstances in high temperature.
5. Not to drop the device, please be sure to hang the belt on your shoulder.
6. Please do not touch the horn (oscillator) and anvil, right after you used.  
You might get your fingers burned.
7. Please do not remodel or install our TAPOMATIC MINI into other machine (e.g. to weld automatically or something else.). It might cause a big problem and we do not guarantee all trouble caused by the remodel or installation.
8. This device is available any type of heat melting synthetic fiber material but Aramide filament which does not melt with heat. Please do not try to weld other material except heat melting synthetic fabrics or guide tapes.
9. Please do not open the body, because more than a voltage of 500 V runs inside (this device moves with 12V rechargeable battery).
10. This device is designed to be able to weld about 2000 to 3000 points using fully charged battery (The number of welding point varies according to the usage). When the battery becomes old or is not enough charged, the number of welding points may be decreased.

### **TIMER KNOB TO ADJUST WELDING TIME (Pg.1- Parts No.7)**

A timer knob is equipped to adjust welding time. Turn the timer knob towards left to shorten welding time, and turn it towards right to lengthen time.

(The dial at the knob shows approx. seconds.)

### **SAFETY CUTTER (Pg.1- Parts No.2)**

When the blade becomes dull, rotate to next cutting point as follows ; Loosen the screw (Pg.1- Parts No.5) and insert a small stick into hole of cutter and turn the blade until the next number (cutting position) is exposed. (From 1 to 8 positions were carved on cutter blade).

At first, a cutting point No.1 is appearing at the blade, and it can be used till the No.8.

After 8, replace the cutter blade with a new one. (Please be careful when you replace the cutter blade not to be injured by yourself.)

### **BATTERY CHARGER**

The temperature of the battery may rise at intensive use, especially when the ambient temperature is high. If you attempt to recharge the battery while the battery is at a high temperature, the battery will not be charged at all or will be charged only partially, and so the battery may not function properly. In this case, please wait for a while to cool down the battery before charging.

(The recommended ambient temperature is between 0°C – 40°C.)

#### Power Indicators

- The power indicator at the battery charger blinks green when the power is being supplied without setting the battery.
- Indicator (when the battery was set on the battery charger)

**Red :** Charging

**Green :** Fully charged

#### **Blinking red :**

Charging has been temporarily terminated as the internal temperature of the battery or battery charger is outside the range possible for charging.

Remove the battery and cool down or warm up the battery and battery charger and then try again.

#### **Blinking green and red by turns :**

Battery or battery charger may not be working properly.

Remove the battery and disconnect the plug, then connect them again.

If the light continues to blink in green or red, the battery or charger may be faulty.

## GUARANTEE

### 1. Repairs within the guarantee period

The guarantee period is 12 months after shipping date from factory. (For the transducer, the term of guarantee is 6 months after shipment.) When your TAPEMATIC MINI has some malfunction within the above mentioned period, please do not try to repair by yourself. If you disassemble and try to repair the device, the guarantee will be lapsed regardless the guarantee period.

\* The battery and battery charger is not under guarantee except initial malfunction (initial malfunction = new item that was received broken).

\*In case the malfunction caused by dropping, soaking, disassembling or any other misuse, it is not guaranteed as well.

### 2. Repairs after the guarantee period

When your device has malfunction, please send us the complete set including batteries, charger and case.

## REPAIRING

Before send back the malfunction device, please try again using **fully charged battery**.

After having received the complete set we will send it directly to the producer for repair. We will send it back to you as soon as possible.

Supplier of this device: